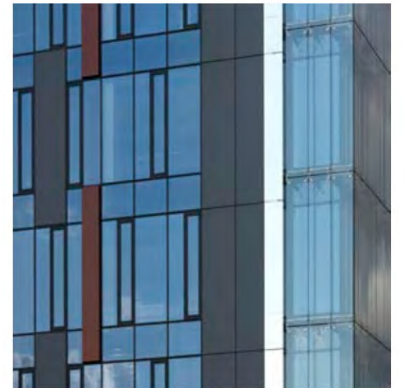
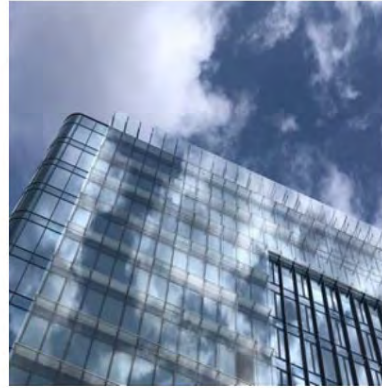
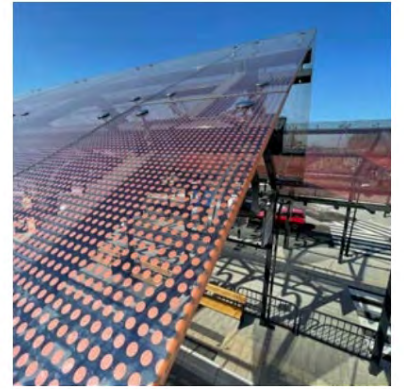






www.glasspace.eu



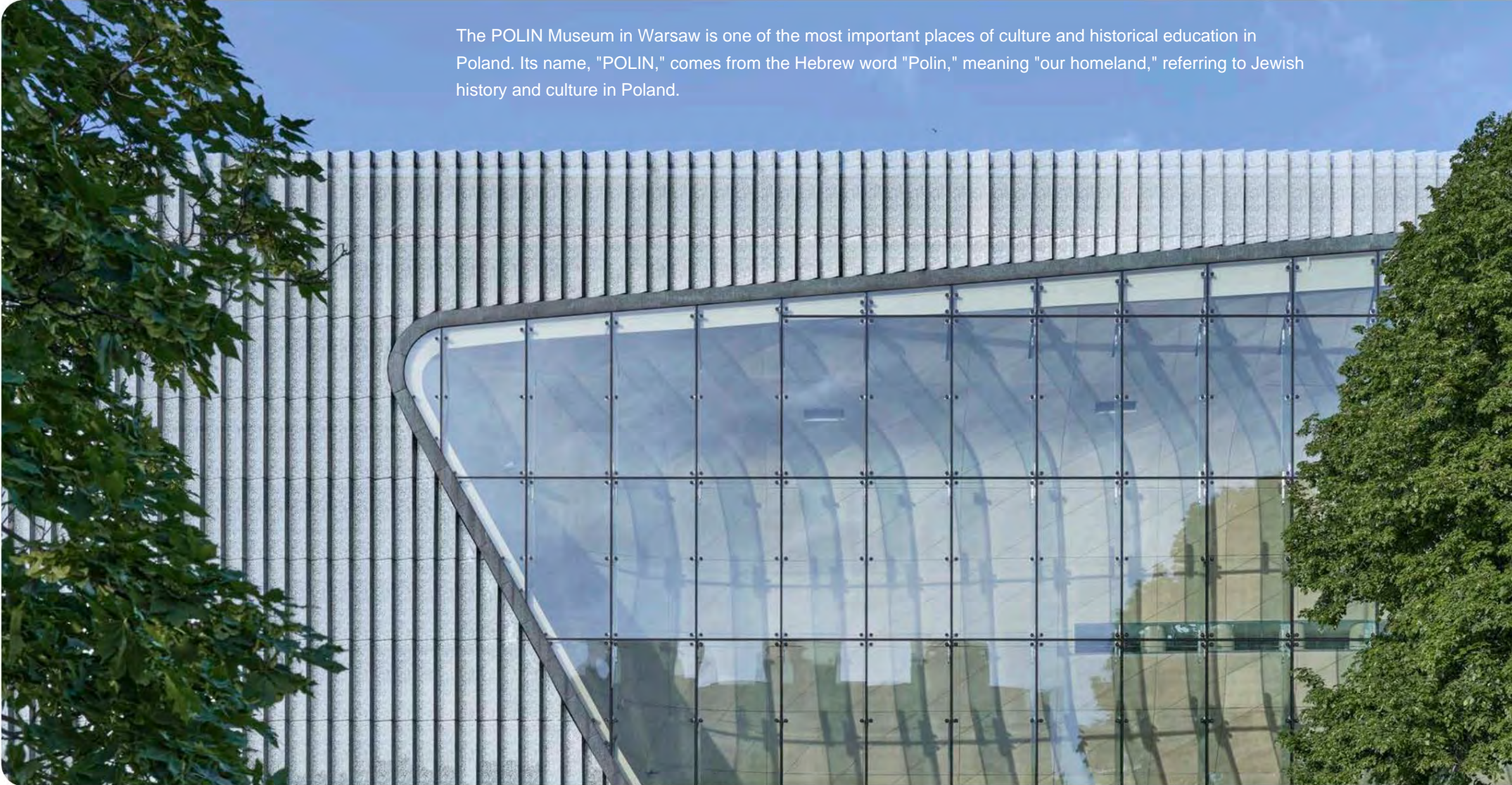


POLIN Museum of the History of Polish Jews

WARSAW

Replacement of a point-fixed glass facade

The POLIN Museum in Warsaw is one of the most important places of culture and historical education in Poland. Its name, "POLIN," comes from the Hebrew word "Polin," meaning "our homeland," referring to Jewish history and culture in Poland.



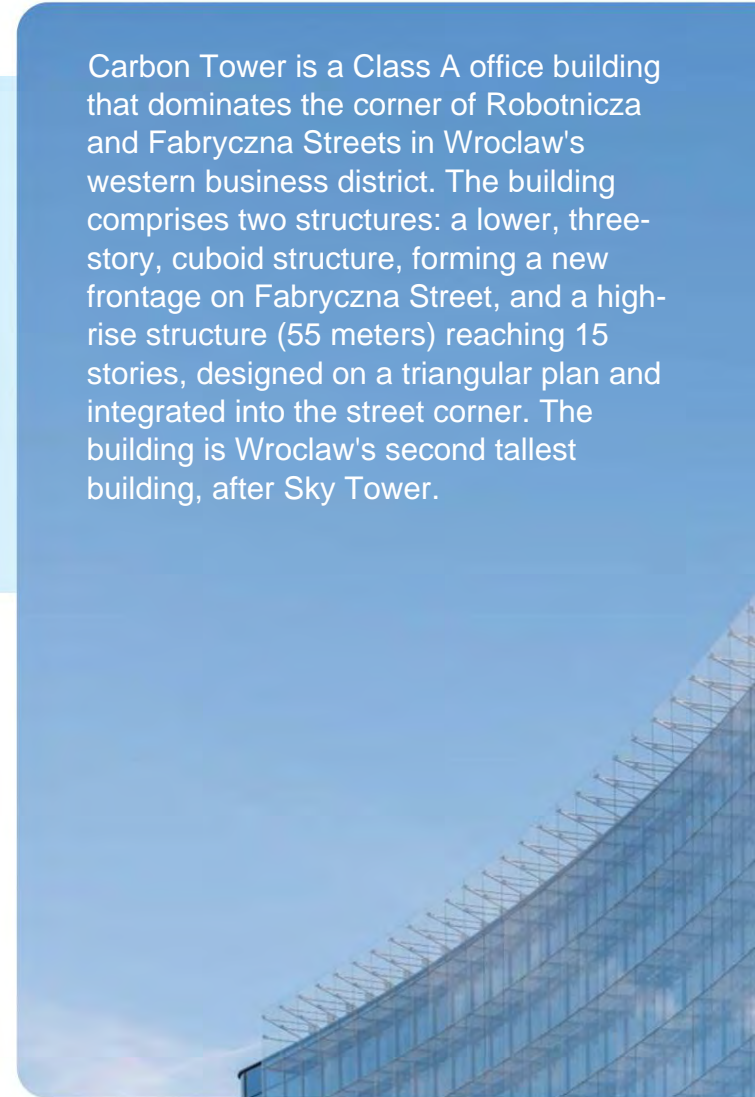


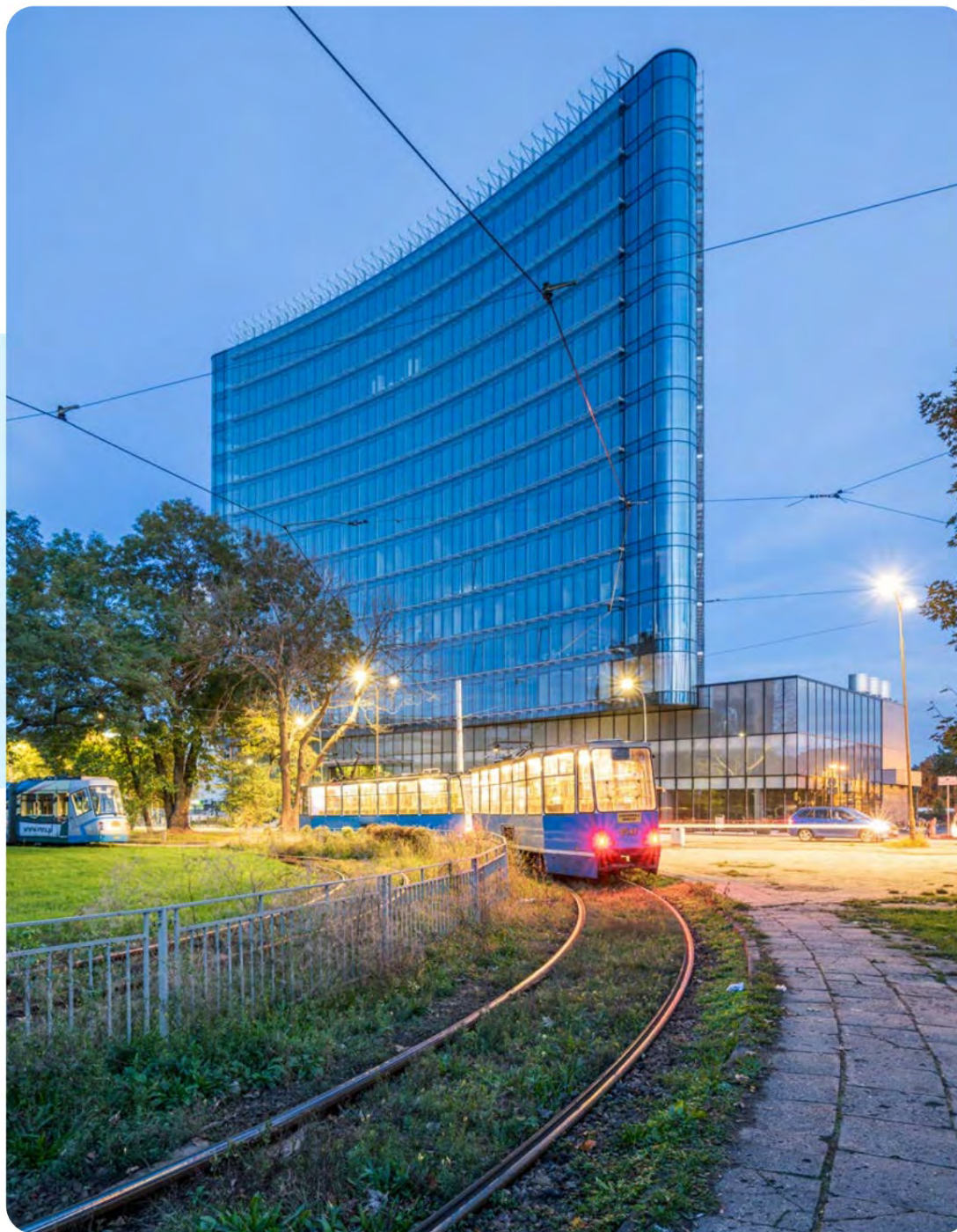
CARBON TOWER

WROCLAW

Point-mounted glass facade

Carbon Tower is a Class A office building that dominates the corner of Robotnicza and Fabryczna Streets in Wrocław's western business district. The building comprises two structures: a lower, three-story, cuboid structure, forming a new frontage on Fabryczna Street, and a high-rise structure (55 meters) reaching 15 stories, designed on a triangular plan and integrated into the street corner. The building is Wrocław's second tallest building, after Sky Tower.







Polish History Museum

WARSAW

Roofing and enclosure of elevators with point-fixed glass

The facade of the Polish History Museum in Warsaw is characterized by a modern design that reflects a contemporary approach to architecture. Simple, geometric shapes and modern materials such as glass, steel, and concrete were used. Many modern museum buildings, including the Polish History Museum, feature glass facades, which maximize natural light and create a feeling of openness and spaciousness.





AUSTERIA

Cultural Center

Raszyn

Skylight, facades
aluminum window and
door joinery

The main objective of the Austeria revitalisation project in Raszyn was to restore the historical significance and cultural value of the Austeria area by reconstructing and renovating existing facilities and buildings associated with this part of the city.

Renovated and restored historic buildings have become important cultural and educational points for the local community.



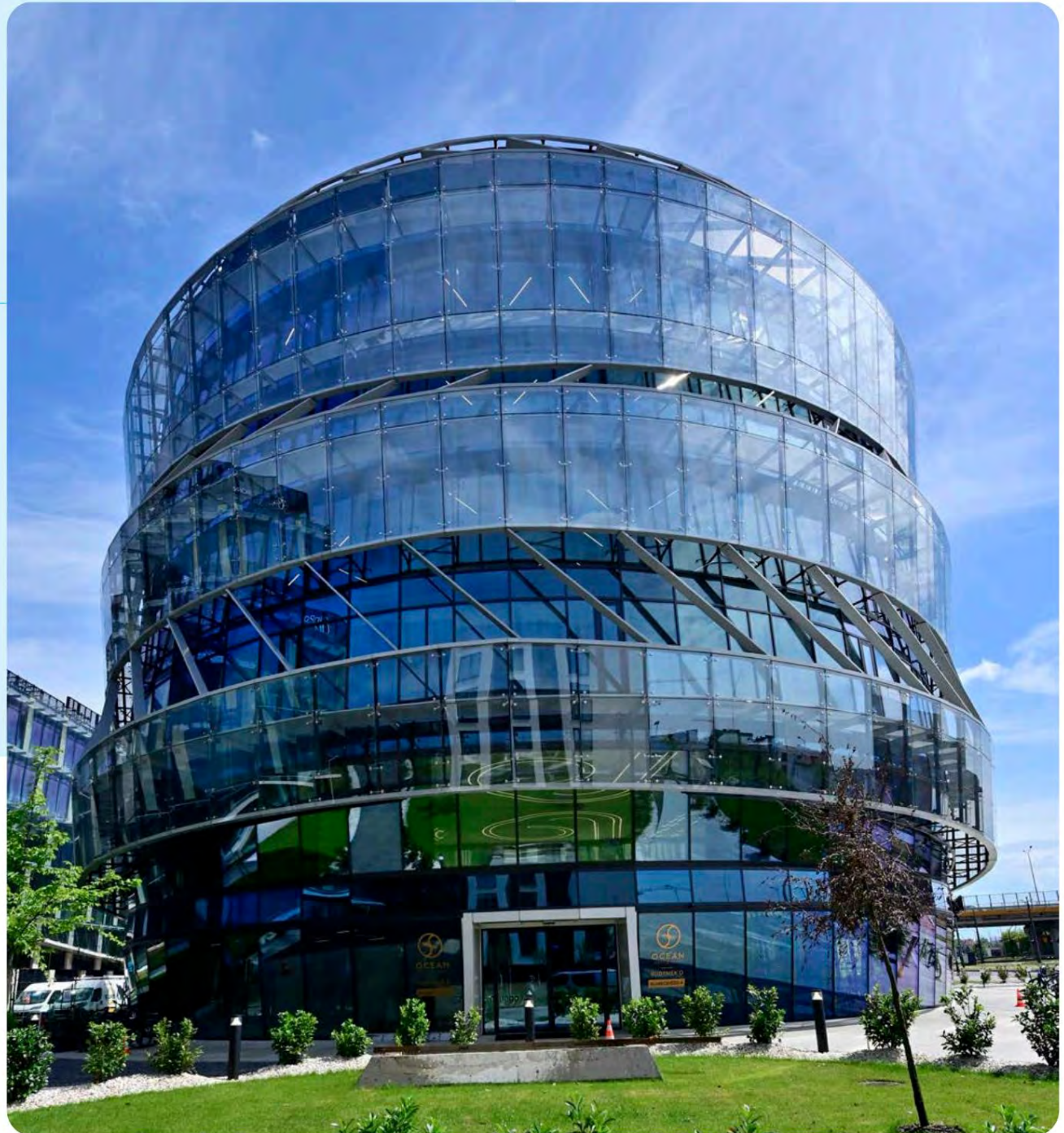


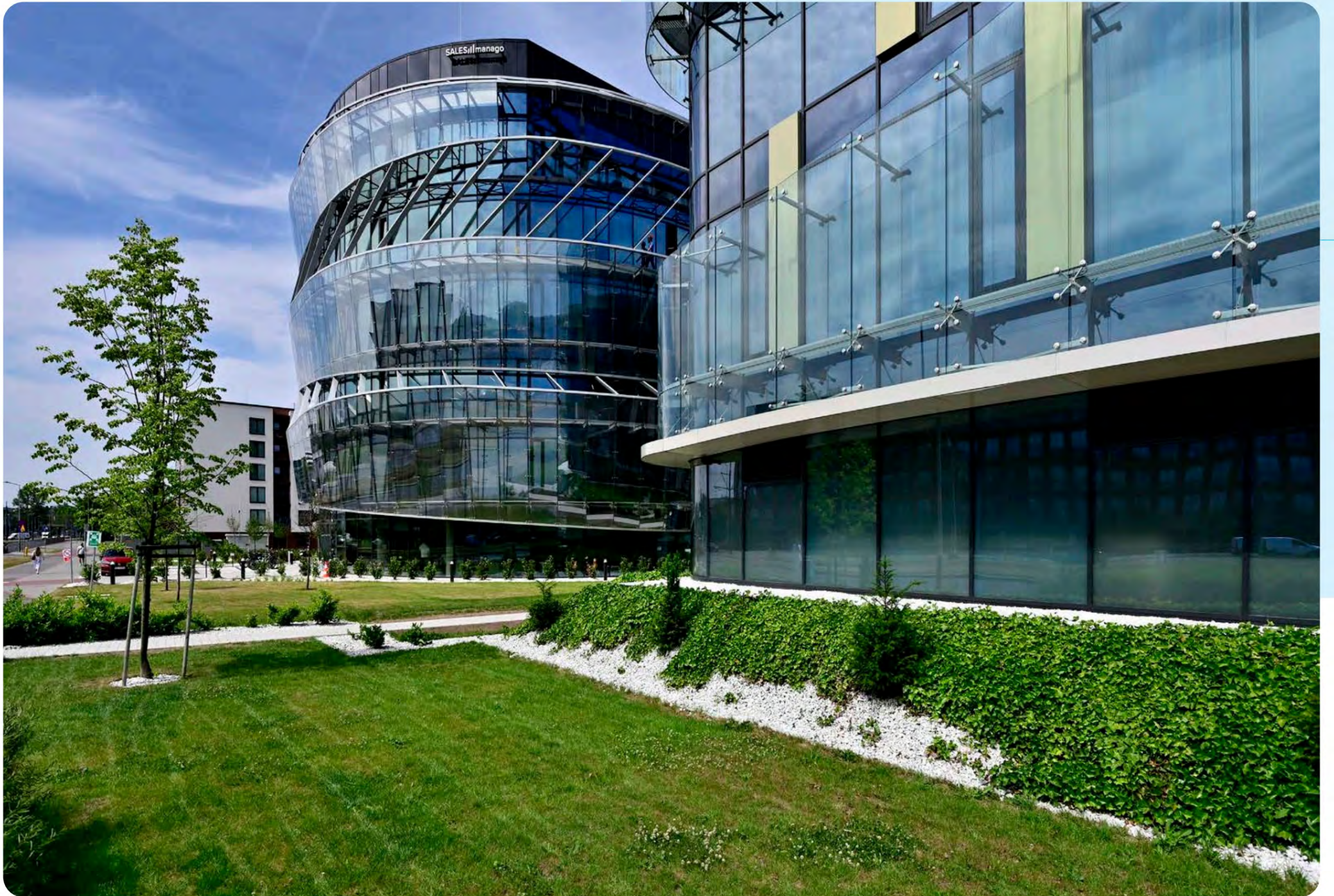
Ocean Office Park D

CRACOW

Glass facade with second-skin point-fixed glass, balustrades

The façade of the Ocean Office Park office complex in Krakow is a significant element both functionally and aesthetically. The unique architecture directly references the project's name – Ocean Office Park – drawing inspiration from the ocean. The project's façade is constructed using "double skin" technology, which enhances thermal and acoustic comfort inside the building and further enhances the building's visual appeal.





Ocean Office Park A

CRACOW

Glass facade with second skin point-fixed glass, balustrades

Ocean Office Park is a complex of office and service buildings being developed at the intersection of Klimeckiego and Nowohucka Streets, in Krakow's Zabjocie district. This location provides direct access to public transportation and efficient connections to every district of the city, including quick access to the Market Square and Kazimierz with its full range of cultural and entertainment opportunities. The unique architecture of the first phase of the complex directly reflects the project's name – Ocean Office Park – drawing inspiration from the ocean. The investment's façade is constructed using "double skin" technology, which increases thermal and acoustic comfort inside the facility and further enhances the building's visual value.





Bus station

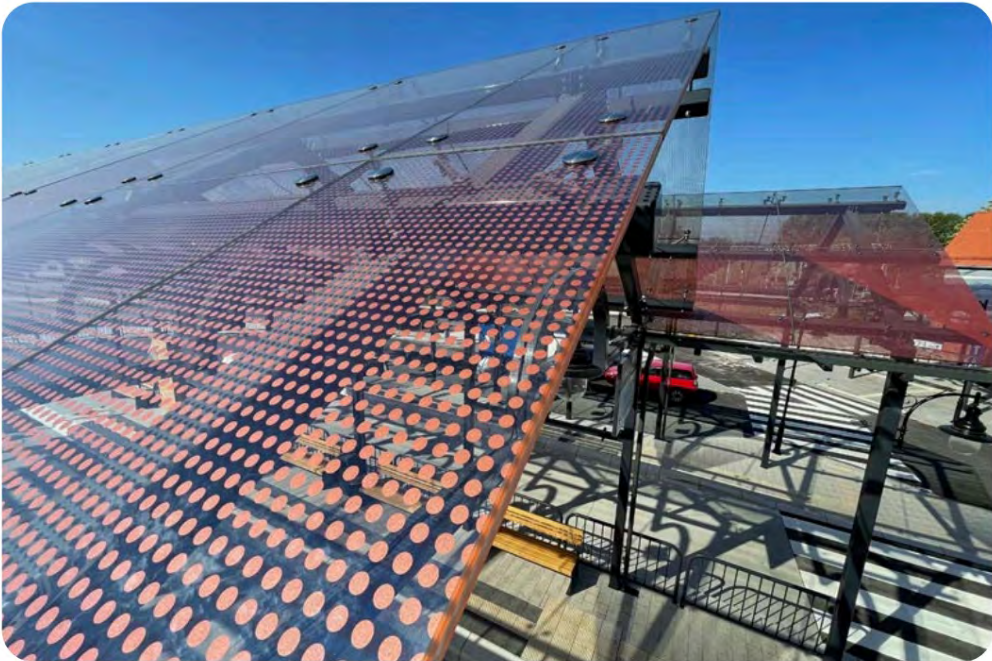
USTKA

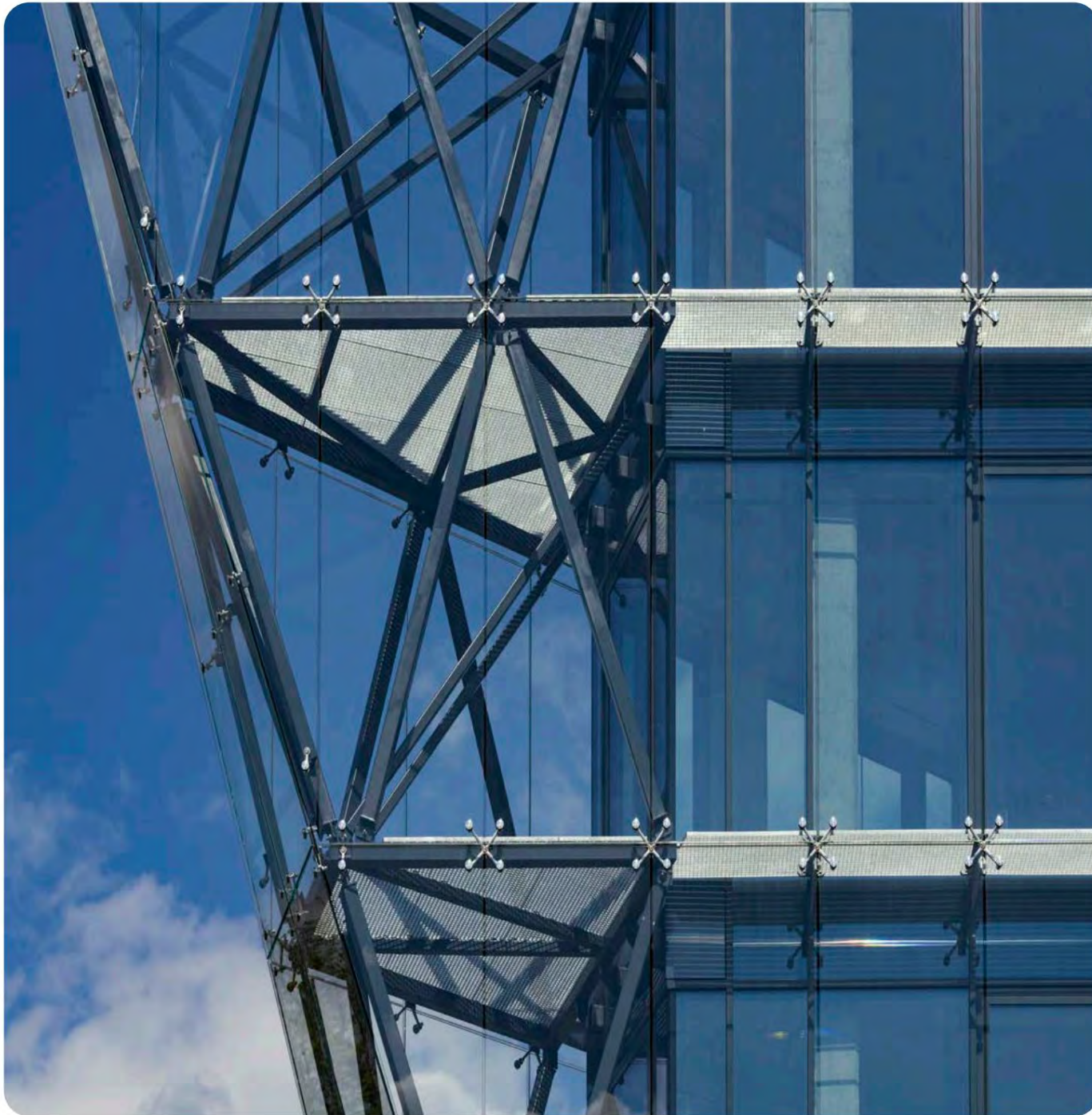


Glass roofs and balustrades, Corten cladding

The Ustka transit center is a major investment. It opened in 2021 after many years of effort. It includes a renovated railway station, a new bus station, and a complete transformation of the surrounding area. The historic railway station building has been restored to its historical character – a clock has been installed at the entrance, and the distinctive turret has returned to the roof. The Ustka station is as beautiful as it was years ago, in its heyday. In addition to the works on the buildings, the following were completed: a terrace with a ramp enabling communication between the buildings over the slope, glazed shelters: a triple platform shelter, between the buildings and in front of the entrance to the bus station building, three bicycle shelters and terrain stairs on the slope.







Equal Business Park D

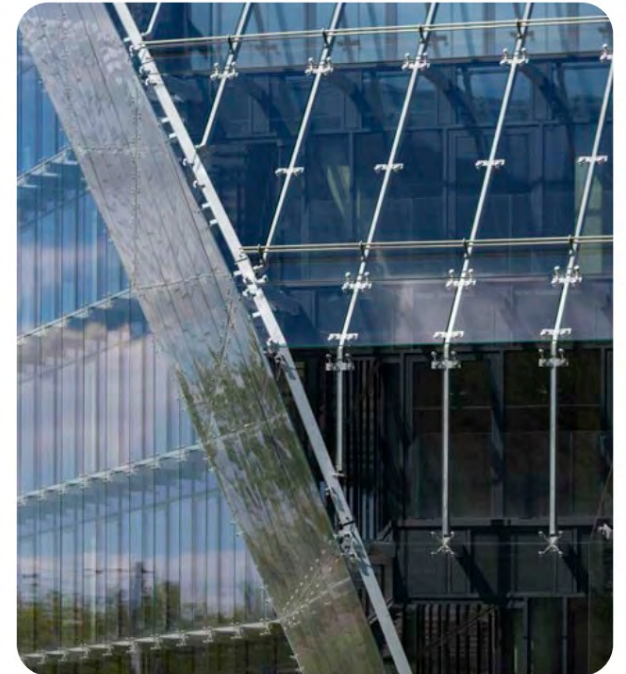
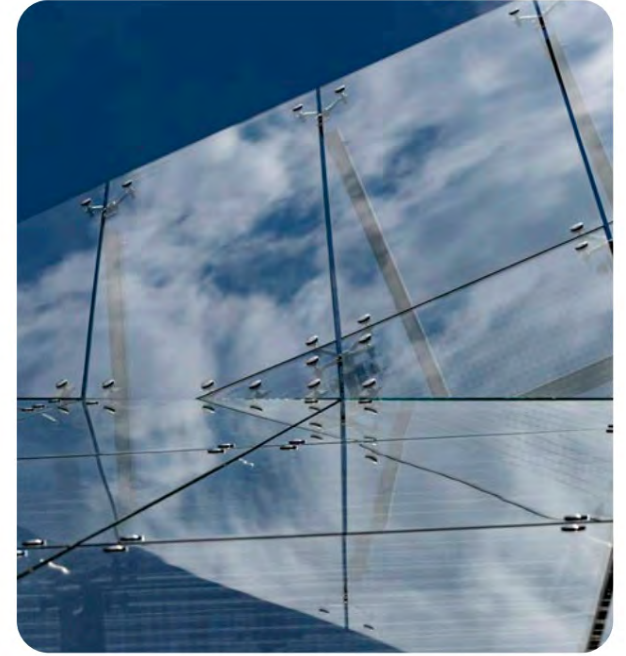
CRACOW

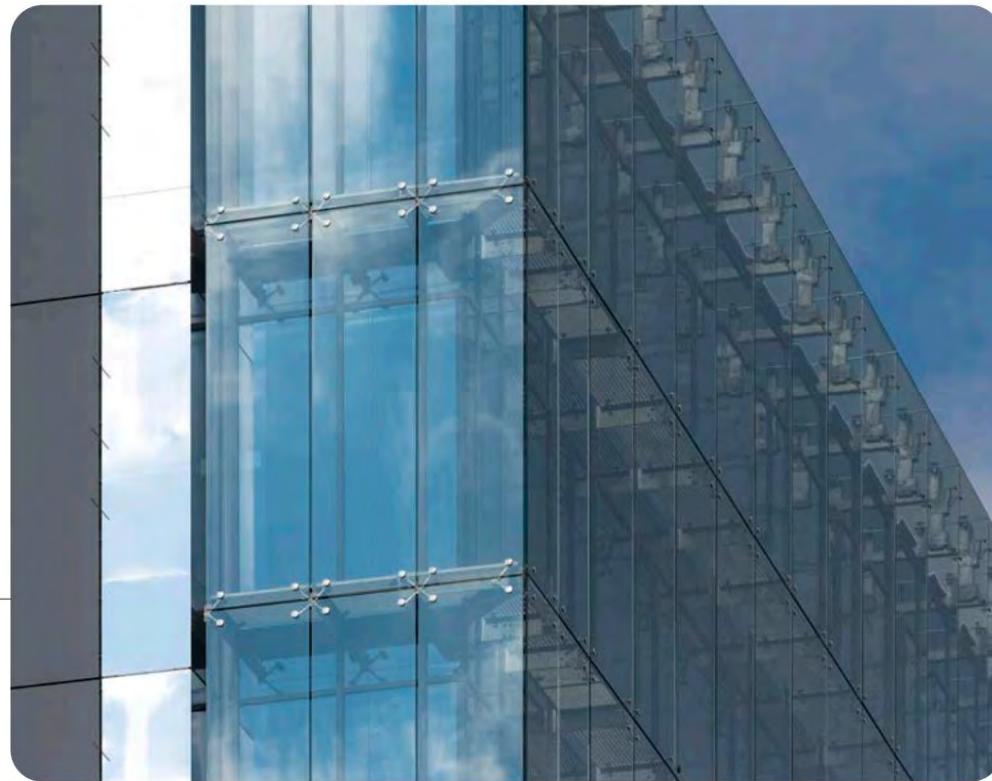
Glass facade with point-fixed glass, balustrades

Equal Business Park D is the functional and modern office fourth stage of a complex located at Wielicka Street in Krakow.

The six-story Building D provides over 11,000 square meters of high-quality workspace. The building's glass facade, based on "double-skin" technology, is a natural extension of the aesthetics of the entire complex.







Tischner Office

CRACOW

Point-fixed glass facade, glass balustrades

Tischner Office is a 10-story office building located at the intersection of Ksiedza Józefa Tischnera and Zakopianska streets in Krakow, offering over 33,600 square meters of modern, Class A office space. The facade of point-fixed glass, known as a "second skin," blends seamlessly with the building's architecture.





Zakopane Apartments

ZAKOPANE

Aluminum and glass balustrades

The Zakopane Apartments are the perfect place for those looking for their own apartment in Zakopane, either for personal use or as a rental. This modern complex, whose architecture reflects the traditional Zakopane style, comprises 241 fully finished apartments and a recreational area available to residents.



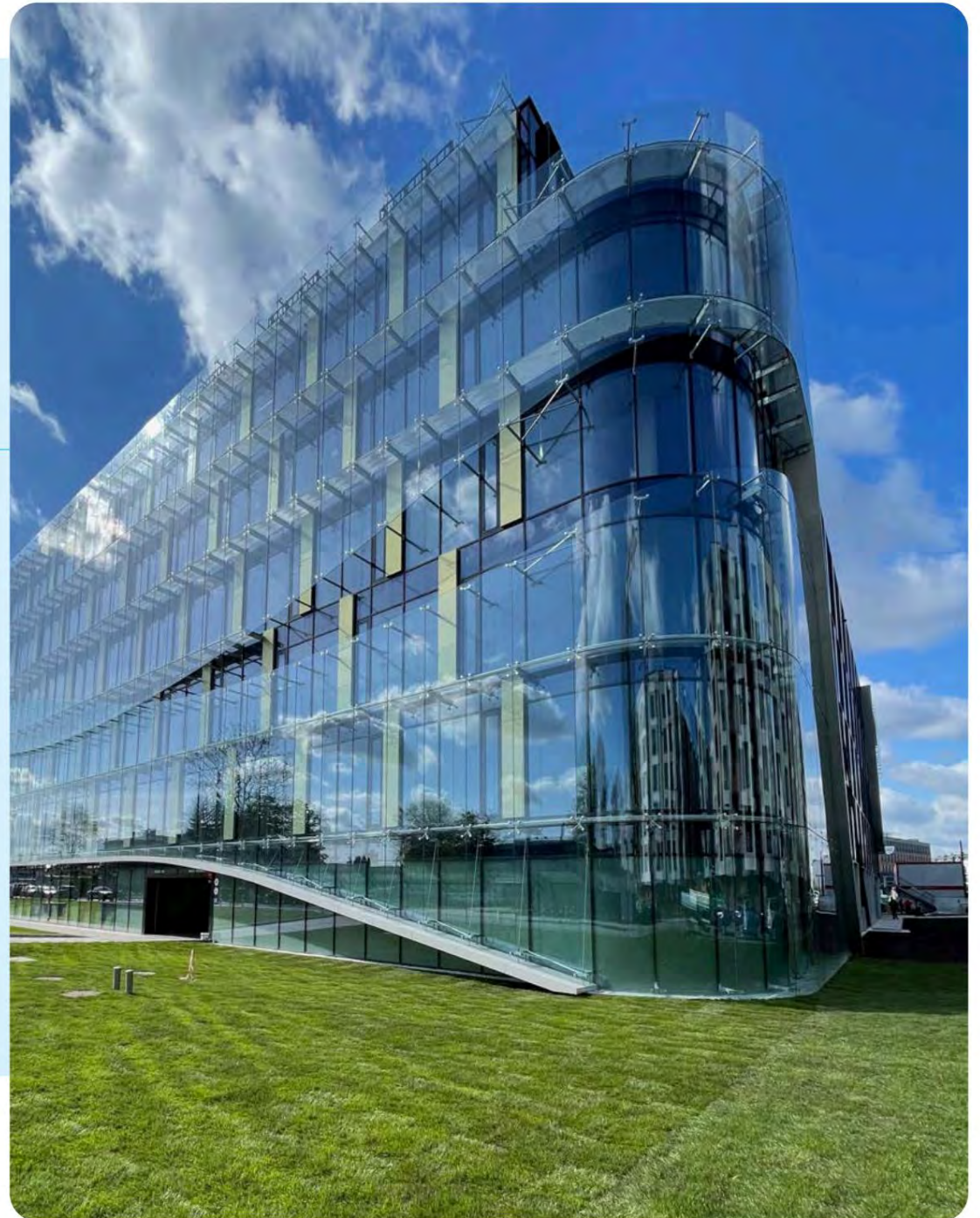


Ocean Office Park A

CRACOW

Glass facade with point-fixed glass, glass balustrades

Ocean Office Park is a complex of office and service buildings being built at the intersection of Klimeckiego and Nowohucka streets, in the Zabjocie district of Krakow. This location provides direct access to public transportation and efficient connections to every district of the city, including quick access to the Market Square and Kazimierz with its full cultural and entertainment offerings. This five-story office building stands 18 meters tall. The glass is point-mounted as a "second skin" on galvanized steel supports and stainless steel crosspieces. The façade is partially attached to an aluminum mullion-and-transom façade. The difficulty was the interpenetrating glass strips in different planes, the lower one recessed, while the upper one protruded. An arched corner was made of curved glass.





Bródno Metro Line II

WARSAW



Glass enclosures for entrances and elevators

The extension of the second metro line to Bródno was a key step in the development of public transport in Warsaw. The new metro stations contributed to improved accessibility, reduced congestion on existing public transport, and the development of the Bródno district. The challenges associated with implementing the project were significant, but the benefits of its completion outweighed these challenges, making it one of the most important infrastructure projects in the Polish capital.





Bemowo Metro Line II

WARSAW

Internal glass structures

Warsaw residents gained a 2.5-kilometer section of the second metro line with two stations – Ulrychów and Bemowo. The underground journey from the current western station to city center takes 12 minutes, and the entire route from Bemowo to Targówek takes about half an hour. Wolska's Ulrychów station is located under ul. Górczewska in the Białowieża area, and the Bemowo station – under Górczewska Street on the western side of Powstanców Śląskich.





Provincial Hospital

USTKA



Patio Glass Roofs

The glass patio at the Provincial Hospital in Ustka provides an open space that is used in a variety of ways by patients, medical staff, and visitors. The construction of the patio within the hospital grounds has yielded numerous benefits, particularly recreational and relaxation space, access to fresh air, and natural sunlight.







Glass Space Sp. z o. o.

Office address:

ul. Cieczota 31, 02-607 Warsaw

+48 22 122 85 40

info@glasspace.eu

Warehouse and production

ul. Krakowska 20a, 32-566 Alwernia

+48 22 122 85 41